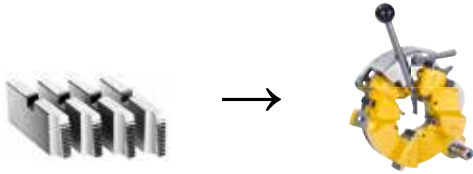


## REMS dies (set)

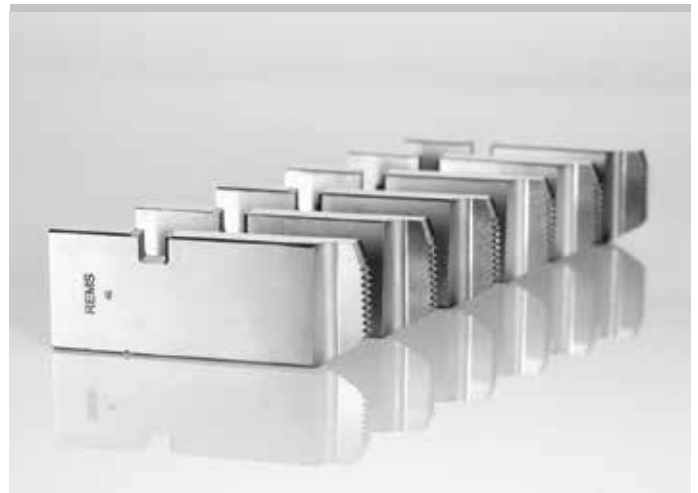
The proven REMS quality dies with precise cutting geometry ensure an excellent start-cutting performance, easy threading and clean threads. Dies in a high-quality special-grade steel, fully tempered and hardened, for extremely long die life.

Dies for other threads (e.g. BSW) on request. Dies in HSS for machining high strength materials 50% extra charge. <sup>1)</sup> Some dies only available in HSS.

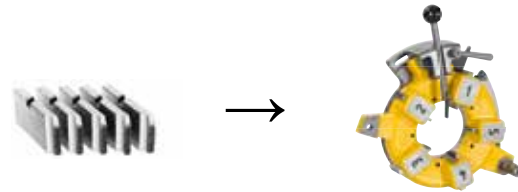


### For universal automatic die head 1/16–2"

Thread type	Size	Art.-No.
Pipe threads R tapered, right-hand ISO 7-1, EN 10226 (DIN 2999, BSPT)	R 1/16–1/8 HSS <sup>1)</sup>	341401
	R 1/4–3/8	341402
	R 1/2–3/4	341403
	R 1–2	341404
Pipe threads G parallel, right-hand ISO 228-1 (DIN 259, BSPP)	G 1/16–1/8	341406
	G 1/4–3/8	341407
	G 1/2–3/4	341408
	G 1–2	341409
Pipe threads NPT tapered, right-hand Taper Pipe Thread ASME B1.20.1	NPT 1/16–1/8 HSS <sup>1)</sup>	341411
	NPT 1/4–3/8	341412
	NPT 1/2–3/4	341413
	NPT 1–2	341414
Pipe threads NPSM parallel, right-hand Straight Pipe Thread ASME B1.20.1	NPSM 1/8	341416
	NPSM 1/4–3/8	341417
	NPSM 1/2–3/4	341418
	NPSM 1–2 HSS <sup>1)</sup>	341419
Conduit threads Pg DIN 40430	Pg 7	341466
	Pg 9	341467
	Pg 11	341468
	Pg 13,5	341469
	Pg 16	341470
	Pg 21	341471
	Pg 29	341472
	Pg 36	341473
	Pg 42	341474
	Pg 48	341475
Conduit threads M EN 60423	M 16 × 1,5	341493
	M 20 × 1,5	341494
	M 25 × 1,5	341495
	M 32 × 1,5	341496
	M 40 × 1,5	341497
	M 50 × 1,5	341498
	M 63 × 1,5	341499
Metric bolt threads M ISO 261 (DIN 13)	M 6	341426
	M 8	341427
	M 10	341428
	M 12	341429
	M 14	341430
	M 16	341431
	M 18	341432
	M 20	341433
	M 22	341434
	M 24	341435
	M 27	341436
	M 30	341437
	M 33	341438
	M 36	341439
	M 39	341440
	M 42	341441
	M 45	341442
	M 48	341443
M 52	341444	
M 56 HSS <sup>1)</sup>	341445	
M 60 HSS <sup>1)</sup>	341446	
Bolt threads UNC Unified Inch Screw Thread ASME B1.1	UNC 1/4–20	341476
	UNC 5/16–18	341477
	UNC 3/8–16 HSS <sup>1)</sup>	341478
	UNC 7/16–14	341479
	UNC 1/2–13 HSS <sup>1)</sup>	341480
	UNC 9/16–12	341481
	UNC 5/8–11 HSS <sup>1)</sup>	341482
	UNC 3/4–10 HSS <sup>1)</sup>	341483
	UNC 7/8–9 HSS <sup>1)</sup>	341484
	UNC 1–8 HSS <sup>1)</sup>	341485
	UNC 1 1/8–7	341486
	UNC 1 1/4–7 HSS <sup>1)</sup>	341487
	UNC 1 3/8–6	341488
	UNC 1 1/2–6 HSS <sup>1)</sup>	341489
UNC 1 3/4–5	341490	
UNC 2–4,5	341491	

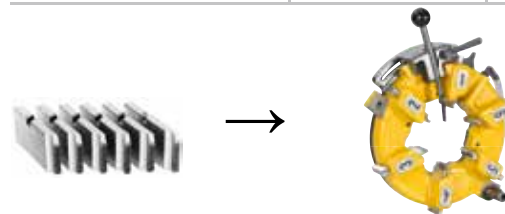


German Quality Product



### For universal automatic die head 2 1/2–3"

Thread type	Size	Art.-No.
Pipe threads R tapered, right-hand ISO 7-1, EN 10226 (DIN 2999, BSPT)	R 2 1/2–3	381430
Pipe threads G parallel, right-hand ISO 228-1 (DIN 259, BSPP)	G 2 1/2–3 HSS <sup>1)</sup>	381431
Pipe threads NPT tapered, right-hand Taper Pipe Thread ASME B1.20.1	NPT 2 1/2–3 HSS <sup>1)</sup>	381432
Pipe threads NPSM parallel, right-hand Straight Pipe Thread ASME B1.20.1	NPSM 2 1/2–3 HSS <sup>1)</sup>	381433



### For universal automatic die head 2 1/2–4"

Thread type	Size	Art.-No.
Pipe threads R tapered, right-hand ISO 7-1, EN 10226 (DIN 2999, BSPT)	R 2 1/2–4	381401
Pipe threads G parallel, right-hand ISO 228-1 (DIN 259, BSPP)	G 2 1/2–4 HSS <sup>1)</sup>	381405
Pipe threads NPT tapered, right-hand Taper Pipe Thread ASME B1.20.1	NPT 2 1/2–4 HSS <sup>1)</sup>	381410
Pipe threads NPSM parallel, right-hand Straight Pipe Thread ASME B1.20.1	NPSM 2 1/2–4 HSS <sup>1)</sup>	381415